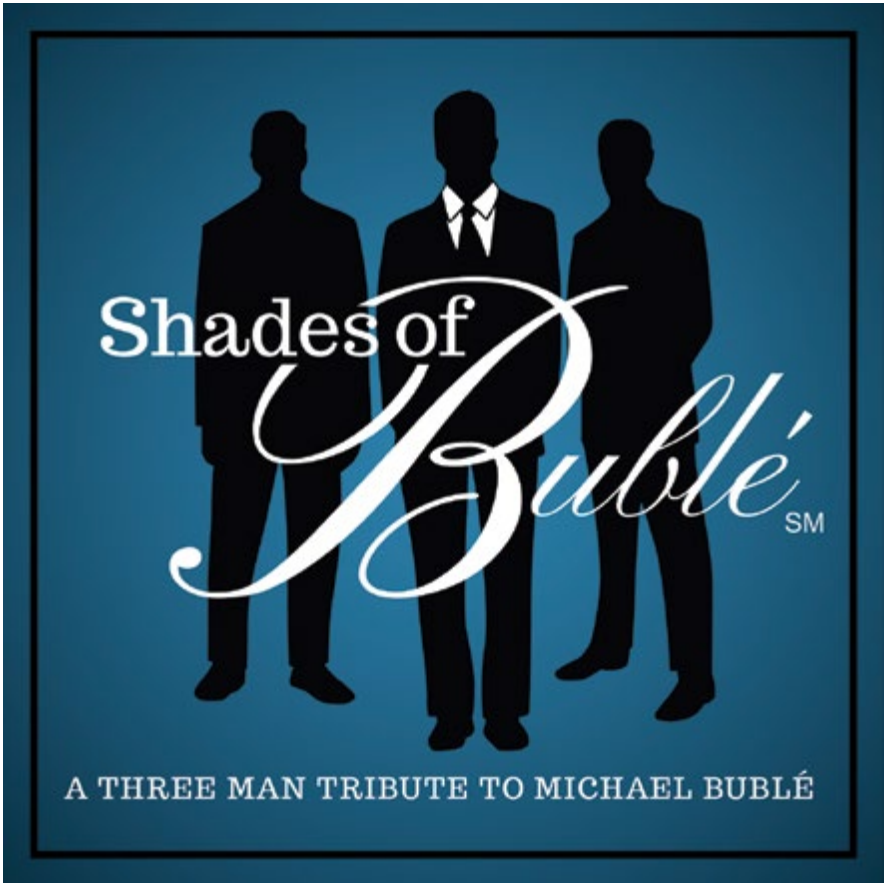




2021 | **SEASON**



Starring
Ron DeStefano Tim Quartier Michael Valentine

IMAGINARY CHARACTERS. REAL IMPACT.

LECOM HEALTH

UPMC HEALTH PLAN



THE RANDY FAIPLER
MEMORIAL FOUNDATION



SHERATON

SHADES OF BUBLE: A THREE MAN TRIBUTE TO MICHAEL BUBLE

Created by

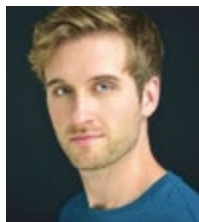
Melissa Giattino and Ron DeStefano – EPIC Arts Management, LLC

Produced by: Drew Pournelle – Blue Flint Productions, LLC

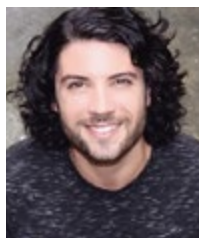
ABOUT THE PERFORMERS:



Ron DeStefano may be known to local audiences as half of the recently-retired Broadway song-and-dance duo Two on Tap, but he now provides entertainment for audiences worldwide as Producing Director of EPIC Arts Management, the creative team behind hit shows like *Shades of Bubl * and *NYC3*. Originally from the Palm Beaches, he is a Phi Beta Kappa graduate of Florida State University with degrees in vocal music and chemistry. Favorite theatrical credits include *Fiddler on the Roof* (Broadway National Tour with Theodore Bikel), *Babes In Toyland* (Lincoln Center), *Rodgers and Hammerstein's Cinderella* (Paper Mill Playhouse) and *No, No, Nanette* (Goodspeed Opera House).



Tim Quartier moved to New York City from his hometown of Syracuse, NY after receiving a BFA in Musical Theatre at Ithaca College. He began performing with *Shades* in 2015 and is thrilled to be back with the group after spending two years on the road performing in the National Tour of *Les Miserabl s*. Favorite theatrical credits include Fabrizio in *The Light in the Piazza* (Theatrical Outfit), Tony in *West Side Story* (Actors' Playhouse, Atlanta Lyric Theatre), Francis in *Forever Plaid* (Arts Center of Coastal Carolina), Marius in *Les Mis rables* (Orlando Shakespeare Theater, Little Theatre on the Square), Link in *Hairspray* (New Theatre Restaurant, Merry-Go-Round Playhouse) and George in *I Love a Piano* (Mac-Haydn Theatre). Special thanks to Mom and Dad!



Michael Valentine has been a member of *Shades of Bubl * since the group's debut in April 2015 at Long Island's John W. Engeman Theater. Favorite regional theatrical credits include *The Who's Tommy* (Tommy) at Texas' Zach Theatre; *Chicago* (Fred Casely) and *Big Fish* (Don Price) with Montana's Alpine Theatre Project; and *Spring Awakening* (Melchior) at New York's White Plains Performing Arts Center. Other favorites: *Next To Normal* (Gabe) at the Sandbox Theatre; *tick, tick BOOM!* (Jonathan) at the Roadhouse Theatre; *Aida* (Radames) at the Erie Playhouse and Cornell's Kiplinger Theatre; *Grease* (Danny), *Les Mis rables* (Enjolras), *The Most Happy Fella* (Ciccio), and *Joseph and the Amazing Technicolor Dreamcoat* (Joseph).

SPECIAL THANKS:

William J. Kelly, Jr., Esq
Larese Floral
Sheraton Erie Bayfront Hotel

Keri's Cake Studio
The Lavender Rabbit
Gris  Audio Visual

ABOUT THE SHOW:

Since debuting in April 2015, *SHADES OF BUBLÉ: A Three-Man Tribute to Michael Bublé* has entertained tens of thousands at theatrical concerts across the USA, gala events, and headline performances onboard luxury cruise ships. Delivering a set list comprised only of songs recorded or performed live by Michael Bublé, this world-class act honors (but doesn't imitate) the sophistication, retro style, and high-energy fun that Bublé himself brings to his concerts while engaging new fans with thrilling new three-part vocal arrangements. Songs from the show, including big-band standards from the jazz era, classic hits from the 50s/60s/70s, as well as Billboard chart-toppers from today can be found on the CD release *SHADES OF BUBLÉ: A Three-Man Tribute to Michael Bublé*... available at Amazon, or online at www.shadesofbuble.com!

SELECTIONS FROM THIS PERFORMANCE

ACT 1

Feeling Good
Moondance
Heartache Tonight
Sinatra Medley
Haven't Met You Yet
Home
Sway
That's Life
At This Moment / Everything
You're Nobody
How Sweet It Is
My Way

ACT 2

It Had Better Be Tonight
Fever
Crazy Little Thing Called Love
Mack the Knife
Dream Doo-Wap Medley
Lost
Twist and Shout
Cry Me A River
Crazy Love / Burning Love
Mrs. Jones
Save the Last Dance for Me
Can't Help Falling in Love With You

THE ORCHESTRA

Woodwinds LINDA FEDERICI, DEB MORVAY
Trumpet..... JEFF GIBBENS, DAN LUCORE
TromboneDOM DEL GRECO
Guitar..... TBA
Drums.....GREG HARDNER
Bass RYAN PATSY
PianoANDREW RAINBOW

PRODUCTION STAFF

Sound Tech GRISÉ AUDIO VISUAL, BRANDEN HARBAUGH
Lighting Design and Tech..... JOSEPH HASSLER
Spotlights BRIANNE BURTON, DANIEL STRIPP, ERICA STRIPP
Photography RICK KLEIN
Front of House Manager ANGELA PULLING
Business Manager..... CHARLES CORRITORE
Box Office Manager CAROLIN LYNN
Box Office Staff..... KAREN ETTER



About The Randy Faipler Memorial Foundation

Randy passed away suddenly and unexpectedly on November 21, 2015. He was an integral part of the Erie/Millcreek communities. The Randy Faipler Memorial Foundation was created in 2016 by friends and family wanting to honor their friend/loved one in some way.

The purpose of the Foundation is to continue Randy's impact and legacy by raising money for local charities and non-profits in his name. Each year an event is held where money is raised and donated to a chosen charity or non-profit. Since its inception, The Randy Faipler Memorial Foundation has raised over \$33,000.00 that has been donated to the following groups:

- | | |
|---|---------------------------------------|
| Make-A-Wish | A.N.N.A. Shelter |
| Lucy's First Step | Embracing Our Veterans |
| Erie City Mission | Mercy Center for Women |
| Orphan Angels Cat Sanctuary | Our Neighbor's Place Homeless Shelter |
| Millcreek Township Volunteer Fire Departments | |

Proceeds from Shades of Buble ticket sales will assist the Erie Playhouse with re-opening the theater as well as renovations costs.

The 50/50 and Basket Raffle proceeds from today will benefit the Second Harvest Food Bank of NW PA.

The Randy Faipler Memorial Foundation would like to thank everyone for their love, help, and support over the past 5 years. Please watch the Foundation Facebook page for future events.

Thank You

FOR SUPPORTING

THE ERIE PLAYHOUSE THROUGHOUT THE SHUTDOWN:

SCOTT ALLEN

